

# QUALITY OF LIFE OF STUDENTS FROM THE FACULTY OF PHARMACY AT MEDICAL UNIVERSITY OF WARSAW IN 2010-2012



Zawodnik S., Krancberg A., Hermanowski T., Quality of Life Students Working Group  
Department of Pharmacoeconomics, Medical University of Warsaw, PL

## OBJECTIVE

The aim of this study was to measure Health Related Quality of Life among Pharmacy students at Medical University of Warsaw and compare results for years 2010-2012.

## METHODS

In the same period of years 2010-2012, students from the Faculty of Pharmacy, Medical University of Warsaw were surveyed with a set of HRQoL questionnaires. The survey was conducted in the middle of the semester, when students have no exams, nor tests and was a part of long-term Pharmacoeconomic Student Chapter's project. Students self-completed pen and pencil versions of questionnaires and didn't receive any compensation. They were asked to give information regarding sex, age, year of study, average grade during the previous year of study and to complete final official Polish version of EQ-5D-5L, followed by EQ-VAS, SF-36 v.1 and EQ-5D-3L.

## RESULTS

- In the study period 444, 369 and 364 students responded from each year respectively and the results were included in the final analysis.
- Concerning SF-36 dimensions, students reported major problems in vitality  $52.54 \pm 15.19$ ;  $53.32 \pm 18.17$ ;  $46.67 \pm 18.23$  as opposed to physical functioning  $96.57 \pm 3.75$ ;  $95.64 \pm 8.28$ ;  $94.15 \pm 9.39$  (Figure 1 and Table 1).
- Mean rate of own health on EQ-VAS was  $79.23 \pm 10.61$ ;  $80.13 \pm 15.00$ ;  $76.05 \pm 17.30$  and mean EQ-5D index, based on Polish TTO value set, was  $0.94 \pm 0.07$ ;  $0.94 \pm 0.07$ ;  $0.91 \pm 0.11$  (in the range from -0.523 to 1). (Figure 2 and Table 2)
- In 2010 and 2011 students of 3rd year and 1st year reported lowest QoL independently of the measure used: EQ-VAS and EQ-index, respectively.
- In 2012 students of 2nd year reported lowest QoL measured by EQ-VAS  $70.33 \pm 20.63$  and 3rd year measured by EQ-index  $0.89 \pm 0.13$ .

Table 2. Results of EQ-VAS and EQ-index.

Year	Results	VAS	EQ-5D
2010	Mean	79,23	0,94
	SD	10,61	0,07
2011	Mean	80,13	0,94
	SD	15,00	0,07
2012	Mean	76,05	0,91
	SD	17,30	0,11

Figure 1. Results of SF-36 questionnaire.

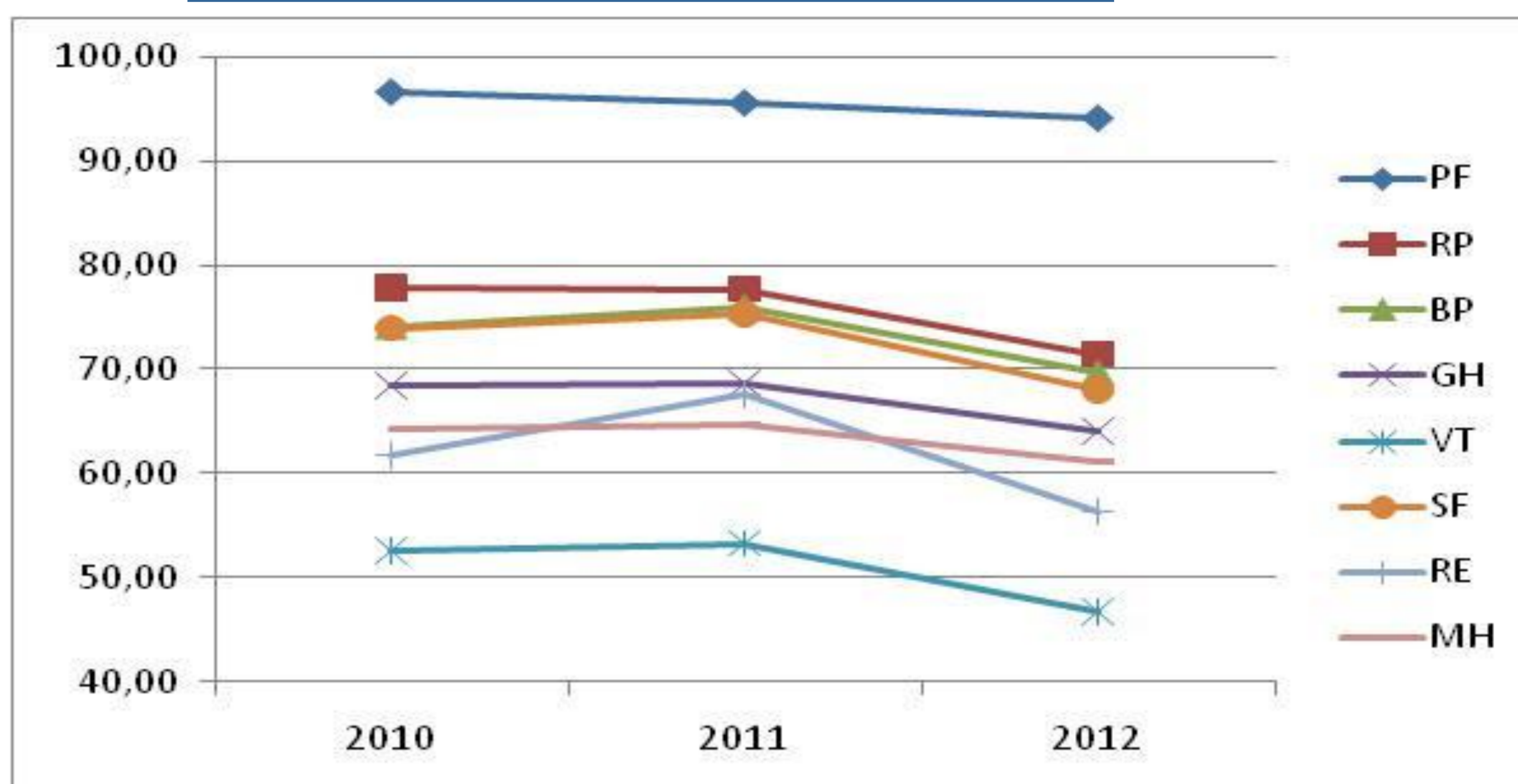
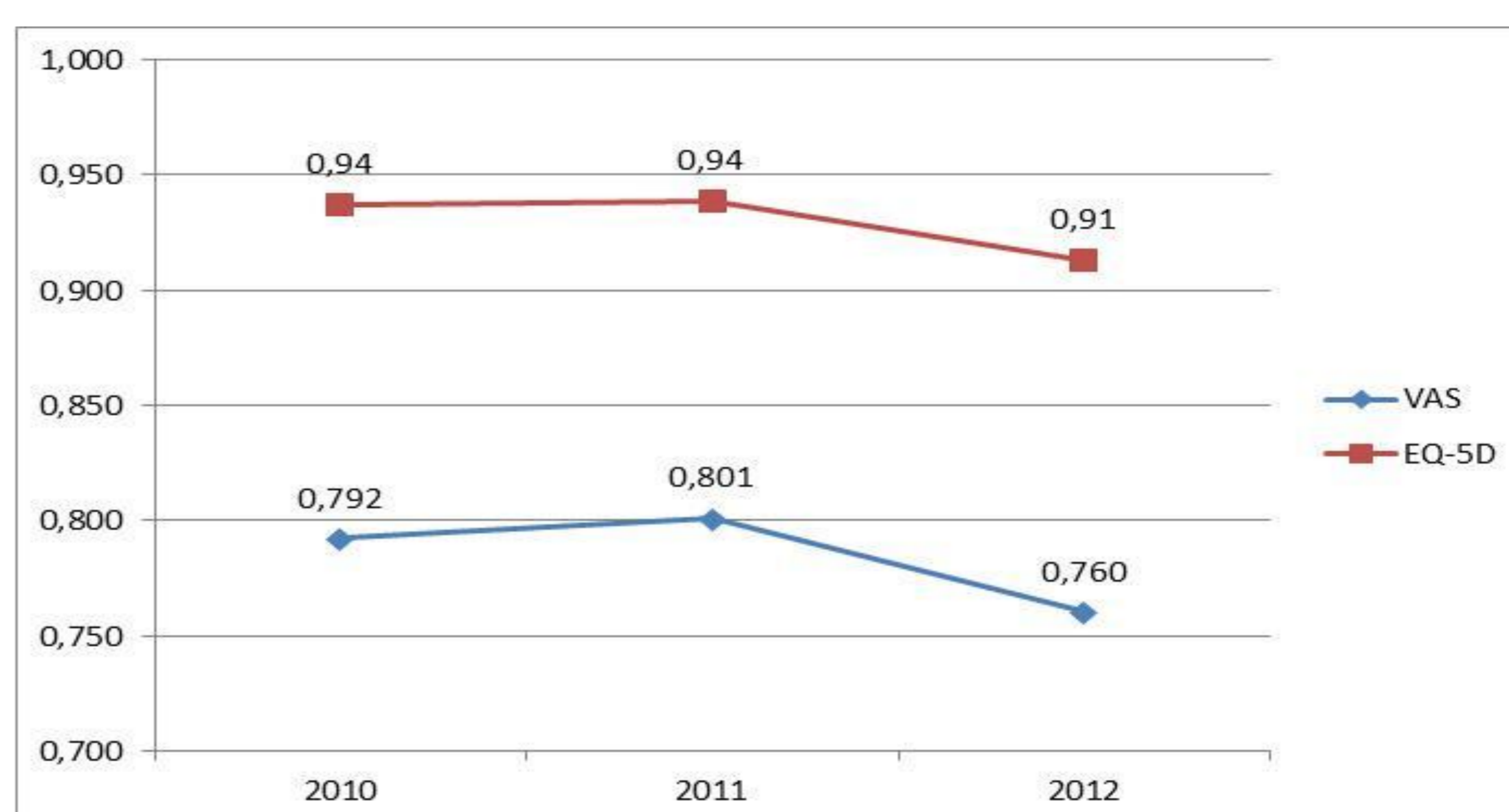


Table 1. Results of SF-36 questionnaire.

Year of study		PF	RP	BP	GH	VT	SF	RE	MH
1	2010	97,79	79,55	77,08	70,58	50,19	75,65	64,94	66,81
	2011	95,00	67,68	77,34	65,27	50,12	74,39	64,23	61,95
	2012	94,48	81,40	73,00	68,55	52,33	79,07	72,48	67,72
2	2010	95,58	75,89	71,55	68,29	52,19	73,77	59,52	64,32
	2011	96,32	79,17	75,89	69,99	52,54	74,78	62,28	64,00
	2012	93,52	64,84	66,73	61,23	41,76	63,05	47,99	58,11
3	2010	95,10	65,63	67,75	62,08	44,48	65,36	52,08	59,00
	2011	96,07	77,46	72,89	68,79	48,61	75,41	67,21	64,52
	2012	93,16	60,63	67,43	59,24	38,39	57,47	42,91	53,15
4	2010	97,01	83,23	72,56	67,74	57,99	78,66	66,67	65,02
	2011	92,61	79,89	74,15	68,50	56,90	74,73	76,45	65,39
	2012	95,45	79,00	71,80	66,98	54,20	72,75	62,00	65,52
5	2010	97,36	84,80	81,88	73,74	57,84	76,35	65,32	66,81
	2011	98,20	84,43	79,36	71,00	58,44	77,46	67,76	68,13

PF- Physical Functioning; RP – Role-Physical; BP – Bodily Pain; GH – General Health; VT – Vitality; SF – Social Functioning; RE – Role-Emotional; MH – Mental Health

Figure 2. Results of EQ-VAS and EQ-index.



## Conclusion:

Generic questionnaires used in the survey are sensitive enough for measuring quality of life in young and relatively healthy population. Assessment of HRQoL was similar in years 2010 and 2012. The survey needs to be continued in next years.